

35TH ANNUAL

2024 Annual CASFM Conference PROGRAM

September 30 - October 3, 2024

Park Hyatt Beaver Creek Resort & Spa

136 E Thomas Pl

Beaver Creek, CO 81620

www.hyatt.com



WELCOME LETTER

WELCOME TO THE 35TH ANNUAL CASFM CONFERENCE

Welcome to the 35th Annual CASFM Conference! We are so happy to be heading up to Beaver Creek Colorado for the very first time! Our goal as an organization is to connect people who keep Colorado's watersheds resilient, and our annual conference is one of the best places we carry out this mission. Come ready to share information, new technologies, and innovative ideas. Also come ready to reconnect with old friends, meet some new ones, and enjoy the mountain scenery!

Your CASFM Conference Committee has been working hard over the last year to organize our annual conference. Monday includes two workshop options and two mountain bike rides followed by the Ice Breaker Reception. Our formal conference opening and keynote will be Tuesday morning followed by project awards and two days of technical sessions offered in concurrent tracks on Tuesday and Wednesday. Please note that several workshop options are offered Wednesday morning and, due to positive feedback from 2023, we are bringing back CASFM InsTED Talks! We'll present project awards and have some fun at dinner Wednesday night before enjoying Karaoke and S'mores as after-dinner entertainment. We round out the conference on Thursday with a workshop and golf tournament. Check out the Schedule At-A-Glance and get the Socio app to make sure you don't miss anything. Also, make sure to schedule a nap on Friday.

Last year in Keystone we challenged membership to come host more workshops and you all delivered! I wanted to highlight the six different workshops being offered this year (which has to be some kind of record):

- Monday afternoon: Geomorphology and HEC-RAS
- Wednesday morning: Culvert Design, Debris Flow Forum, and Become a Mental Gymnast Workshop
- Thursday morning: BLE Data for Floodplain Management Workshop

Thank you so much workshop leaders for your willingness to put together materials and share your knowledge with others!

As a committee, we are excited to share numerous technical tracks and workshops from around the State. CASFM members always deliver amazing technical content and our biggest problem is trying to cram as much into a few days as possible. However, with all of the engineering technical knowledge flying around, we think it's fun to bring in other perspectives by seeking out non-technical keynote speakers. This year, we are excited to hear from Michael Wigge who bartered his way to a dream vacation, worked on MTV, and probably has a lot of life experiences that goes beyond conditional formatting in a spreadsheet. Come Join Michael, laugh, and be inspired as he challenges us to restructure our fundamental understanding to increase our impact!

Thanks to all of the volunteers that make this conference a reality! Just a glance at the overall schedule shows you how much work has gone into this event. I am always impressed at the great balance of technical training and social networking at the CASFM conference, and this year is no different. A special thanks to all of the sponsors too, who enable us to fund generous scholarships as an organization and keep our registration costs as low as possible.

Join your colleagues as we work to promote, enhance, and protect streams and floodplains for the benefit of all. Looking forward to seeing you in Beaver Creek! And we hope to see you next year in Steamboat for the in 2025 Conference!



A handwritten signature in blue ink that reads "Jason Messamer".

Jason Messamer
Conference Chair
Colorado Springs Utilities



ACCESS THE CONFERENCE APP

We're so glad that you're joining us for the 2024 Annual CASFM Conference! It is time to log in to the Event App and set up your networking profile. If you've already downloaded and logged into the Mobile App, great! Simply use the app's event search to find and download the 2024 Annual CASFM Conference.

TROUBLESHOOTING: If you have used the WebEx App for past conferences, you may need to uninstall and reinstall the app if you have trouble finding the 2024 conference.

Mobile App Instructions:

1. Follow this link: [WebEx Promo Link](#)
2. Select the correct app download button for your device and download the app.



3. Open the app and enter the email address you used to register for the event, or use one of the social sign-in options. If you use social sign-in, the social account you use must match the email address you registered with.
4. If you entered an email, create a password and click Sign Up.
5. Fill in your networking profile and click Continue. Your profile information will help you connect with other attendees!
6. Now, browse for 2024 Annual CASFM Conference or use the search bar to find it. Once you've found it, tap on it.
7. A pop-up will appear asking for an Access Code. Enter BCCO2024 and tap SUBMIT.

You're in! Feel free to start exploring. If you have any questions about the Event App, or if you have trouble logging in, don't hesitate to reach out. Contact Stacey Thompson at: staceythompson8@gmail.com

You can also join the Event App from your laptop or desktop computer! Here's how:

Web App (Desktop/Laptop) Instructions:

We recommend using the Google Chrome browser for the best experience.



1. Follow this link: [WebEx Promo Link](#) and click the click the "Access on the web" option.
 2. Enter the email address you used to register for the event or use one of the social sign-in options. If you use social sign-in, the social account you use must match the email you registered with.
 3. If you entered an email, create a password and click Sign Up.
 4. Enter this Access Code: BCCO2024.
 5. Fill in your networking profile and click Continue. Your profile information will help you connect with other attendees.
- You're in! Feel free to start exploring. If you have any questions about the Event App, or if you have trouble logging in, don't hesitate to reach out. Contact Stacey Thompson at: staceythompson8@gmail.com



2024 CASFM Conference Committee



Jason Messamer
Committee Chair
Colorado Springs
Utilities



Shea Thomas
Program Coordinator
Providence
Consulting



Sarah Houghland
Facilities Coordinator
Olsson



Emily Villines
Graphic Design
Calibre Engineering



Stacey Thompson
Registration &
WebEx Admin
Independent



Michelle Danaher
Sponsors
Coordinator
Olsson



Jeff Battiste
Project Award
Coordinator
MHFD



Saman Mehdi
Registration Desk
AtkinsRealis



John Loranger
Golf Tournament
WSP

2025 Officers & Regional Representatives

Chair

DANNY ELSNER

Dewberry



Vice Chair

JEN WINTERS

MHFD



Secretary

JEREMY DEISCHER

ICON Engineering



Treasurer

FRANS LAMBRECHTSEN

Kimley-Horn



NE Region

ANDREW FISHER

Olsson



NW Region

LISA FROSHAUG

City of Grand Junction



SE Region

JORDAN BECKER

Matrix Design Group



SW Region

RUSSEL ANDERSON

Michael Baker



Metro Region

MELANIE WALTER

City of Arvada



Past Chair

DREW BECK

Matrix Design Group



CONFERENCE DETAILS & ACCOMMODATIONS

CONFERENCE CANCELLATION

Canceled registrations will be refunded in full, minus credit card fees, through September 10, 2024. Registrations canceled between September 11, 2024 and September 21, 2024 will receive a 50% refund minus credit card fees.

Cancellations made after September 21, 2024 will not be refunded.

Cancellations must be made by contacting our registration coordinator Stacey Thompson at staceythompson8@gmail.com.

If you cancel your registration, remember to call your hotel to cancel your hotel accommodations.

ADDITIONAL MEALS

The Conference Fee includes all meals listed in Schedule-at-a-Glance. Meal tickets do not need to be purchased for the registered conference attendee.

If desired, extra meal tickets may be purchased for the attendee's guest (spouse, children, etc.) by checking the appropriate boxes in this section of the online registration form.

- Tuesday Lunch | \$70
- Wednesday Lunch | \$70
- Wednesday Dinner | \$120

HOTEL ACCOMMODATION & DETAILS

Park Hyatt Beaver Creek Resort & Spa

Park Hyatt Beaver Creek Resort & Spa

136 E Thomas Pl

Beaver Creek, CO 81620

www.hyatt.com

	Beaver Creek Park Hyatt 136 East Thomas Place	Beaver Creek Lodge 26 Avondale Lane
Number of Rooms in Block	150	40
Room Rate	\$298	\$269
Location	In conference center building	Very close to conference center (but must walk outside to get to it)
Booking Process	Use group specific link: Park Hyatt Link	Use group specific link: Beaver Creek Lodge Link OR Call 888-236-2427 Guests must identify themselves as part of CASFM to receive discounted group rate.
Available Dates	Friday, September 27 - Friday, October 4	Friday, September 27 - Friday, October 5
Cutoff Dates	September 4	September 1
Resort Fee	\$15/day	\$25/day
Parking Fee	\$20/day	\$15/day
Check-in/Check-out	4 PM / 11 AM	4 PM / 11 AM
Deposit	One night room & tax due at time of booking. Remaining balance charged 7 days prior to arrival.	None
Cancellation Policy	Non-refundable 7 days prior to arrival. No shows charged equivalent of one night.	Full refund if canceled within 72 hours of arrival. No shows charged equivalent of one night.
Other Notes	10% off spa treatments 5% rebate on guest room revenue	None



LODGING MAP & CONFERENCE CENTER

AREA MAP

BEAVER CREEK VILLAGE MAP



- ★ Conference Center
- ★ Beaver Creek Park Hyatt
- ★ Beaver Creek Lodge

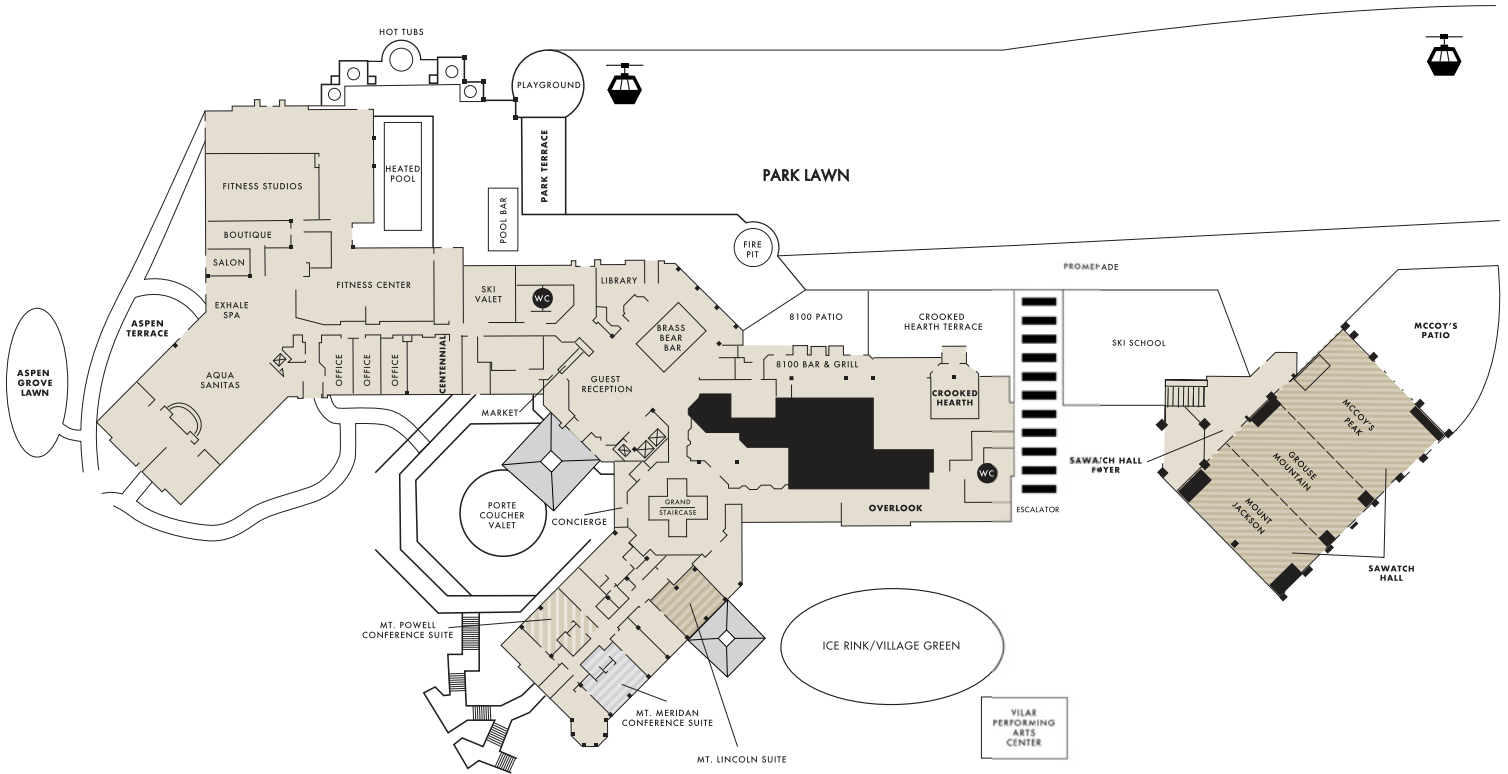


CONFERENCE ROOM LAYOUT

FLOOR PLAN & DIRECTIONS

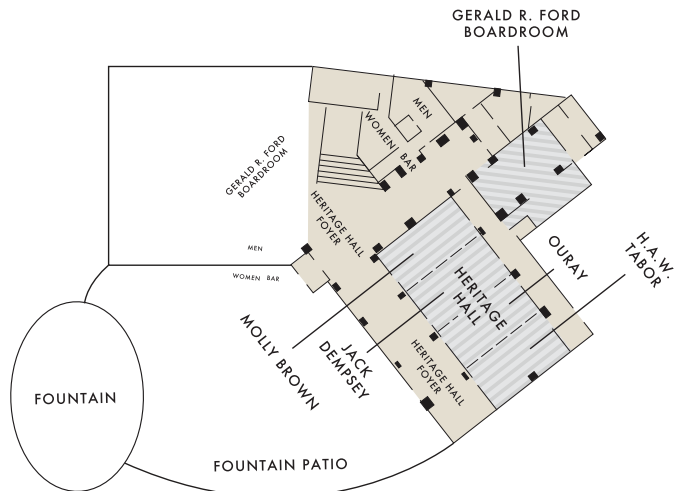
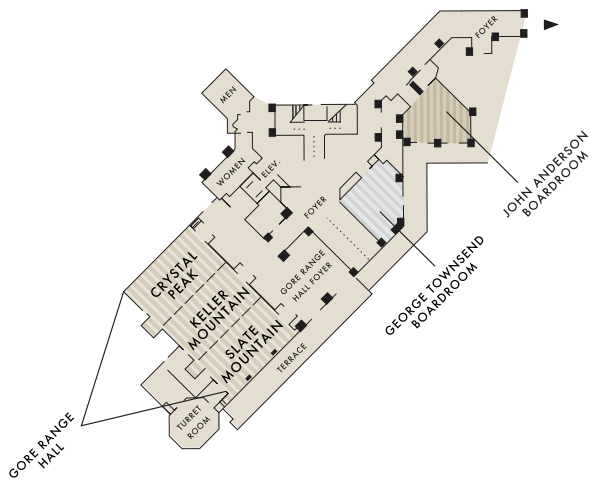
HOTEL LOBBY LEVEL

GERALD R. FORD HALL



HOTEL CONFERENCE LEVEL

GERALD R. FORD HALL MEETING LEVEL



PARK HYATT BEAVER CREEK



KEYNOTE

CHALLENGE-4-CHANGE.

Michael Wigge

Michael Wigge traveled to Antarctica without a penny in his pocket. He turned an apple into a Hawaiian dream home by bartering. He holds records for the longest handshakes with Angelina Jolie and Oliver Stone. A former MTV host, Michael has appeared on the Tonight Show and has written two books: *How to Barter for Paradise* and *How to Travel the World for Free*. He is an adventure seeker and challenger who is determined to drive change and prove what a single individual is capable of achieving.

Michael has helped companies and organizations all over the country embrace change, increase motivation, and develop leadership skills. His focus is on inspiring the workforce to achieve goals. He helps his clients and audiences improve their skills in workplace negotiation, stress management, burnout mindfulness, resilience, change management, and intercultural relations. He challenges us to restructure our fundamental understanding to increase our impact.

Join us for this entertaining and impactful keynote, which is sure to make you laugh and inspire you.



Images courtesy of Michael Wigge



[Learn more about Michael Wigge in his YouTube trailer](#)

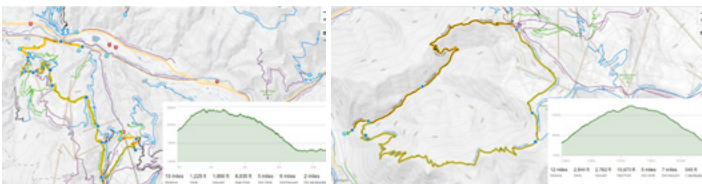


FUN!

MOUNTAIN BIKE RIDE

There are two options for trails this year at CASFM's annual conference mountain bike ride. One is Beginner-Intermediate level and one is Intermediate-Advanced level.

To receive more information or to sign up, please email Drew Roberts: droboters@mhfd.org



YOGA

Gore Range

6:30-7:30 AM

Start your day with yoga, open to all attendees free of charge. Yoga will be offered every morning of the conference.

Led by Melanie Walter: mwalter@arvada.org

SILENT AUCTION - BID NOW!

The CASFM Silent Auction held at the annual conference is the primary funding source to support CASFM's three annual scholarships. CASFM has been providing scholarship opportunities for local Colorado students who strive to improve, protect, and manage our critical water resources which is essential for mitigating flood risk and maintaining our waterway ecosystem. To learn more please go to: <https://www.casfm.org/about/committees/scholarship-committee/>

Bidding opens at noon on 9/30/2024. It's open to all CASFM members, not just conference attendees, and bidding will close during Wednesday night's dinner at 6pm.

Credit card information must be provided to bid, and winning bidders will be charged immediately upon the close of the auction.

Check out the items [HERE](#) and let the bids fly to support future professionals!

Please contact Selena Klosowski at 303.446.3520 or by email at Selena.klosowski@denvergov.org.

WELCOME SOCIAL

Park Hyatt Beaver Creek Resort & Spa Crooked Hearth

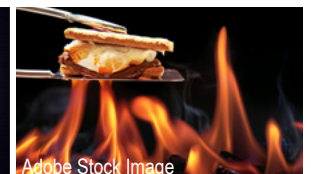
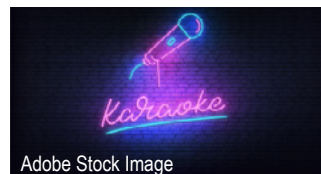
136 E Thomas Pl, Beaver Creek, CO 81620, USA
7:00 PM - 9:00 PM



AWARDS BANQUET ENTERTAINMENT

Love it or hate it, karaoke night is back! Wednesday evening following the awards banquet.

We'll also have s'mores by the firepit for those who still want to socialize but aren't into karaoke.



GOLF TOURNAMENT

Location: Eagle Vail Golf Club

Time: Thursday, October 3 @ 10:00 am
Shotgun start.

Cost: \$80 (includes range balls, 18 holes, cart, and raffle prizes)

Limit: 80 people

Contact: John Loranger, WSP; john.loranger@wsp.com



WORKSHOPS

Geomorphology Short Course

Monday | 1:00 (4 hours)

The importance of understanding fluvial geomorphology is central to our desire to construct more holistic stream systems. This session presents useful information for the practice of stream restoration and the demystification of the science. In this short-course, we will present fundamentals of fluvial geomorphology and how these principles can be applied in the design process. Topics include Lane's balance (what it does and does not mean), the concept of bankfull flow, sediment regime, stream response potential, effective discharge, stream types (plan form and bed form), channel evolution, and basic terminology. The discussion will then shift to the application of these basic principles in design. Different approaches to quantify bankfull flow and the process of calculating effective discharge will be presented. Effects of flow changes on channel morphology, be they increases due to development or decreases due to water diversions, and how to incorporate these changes into design will be discussed. Guidance for designing stream planform and bedform that is appropriate in different project settings will be given. We will discuss technical approaches, software, and modeling tools. Applications and limitations of sediment transport modeling, incipient motion calculations, and sediment competency will be presented. With the great number of topics to be covered, the presentation will focus on high-level concepts and approaches and not dig deep into specific calculations. We will provide concepts that will expand the repertoire of practiced geomorphologists but do so at a level that those with only a precursory level of understanding of geomorphology will be able to follow.

Hands-On HEC-RAS 2D Workshop (for Intermediate 1D HEC-RAS Users)

Monday | 1:00 (4 hours)

Participants will learn how to develop HEC-RAS models, including recently added features. The workshop will alternate between brief lectures and hands-on exercises. Topics covered include spatial precipitation/infiltration, bridge hydraulics in 2D areas, editing and visualization tools, and computational solvers. Learning Objectives: 1) Open, explore, and modify 2D HEC-RAS models, 2) Understand and use the new features of HEC-RAS, and 3) Build a 2D rain-on-grid HEC-RAS model from scratch. Topics Covered: 1) Overview of HEC-RAS 1D/2D 2) Importing Terrains and Land Cover with RASMapper 3) Generating 2D Flow Areas and Running a 2D Model 4) Reviewing and processing results with RASMapper Workshop Outline: 30% Lecture, 60% Hands-On Modeling Exercises, 10% Q&A.

Become a Mental Gymnast: Innovative Approaches to Cognitive Flexibility

Wednesday | 8:30 (2 hours)

In today's rapidly evolving world, the ability to think differently is not just an asset but a necessity. Our conference training workshop, "Become a Mental Gymnast: Innovative Approaches to Cognitive Flexibility" aims to equip participants with the tools and techniques to foster an innovative mindset, both for yourself and your teams. This interactive workshop delves into the science of thought patterns, explores the benefits of cognitive diversity, and practices flexible thinking. Through a series of real-world examples and hands-on activities, attendees will learn how to break free from traditional thinking traps and embrace new perspectives. We will cover methods to stimulate creative

problem-solving, encourage constructive questioning, and promote an environment where unconventional ideas flourish. Participants will leave with a renewed sense of curiosity and a toolkit of strategies to apply in their personal and professional lives. Join us to unlock the potential of thinking differently to drive change in your organization and beyond.

Culvert Design Workshop

Wednesday | 8:30 (4 hours)

This workshop explores culvert design and maintenance, crucial for the effective functioning of stormwater and roadway infrastructure. Beginning with an examination of standard culvert terminology, features, and fundamental hydraulic equations, attendees gain a solid understanding of the principles underlying culvert design. The workshop delves into various design criteria, explains inlet and outlet control hydraulics, as well as the hydraulic factors that influence them, and presents conventional design methodologies. To enhance comprehension and practical application, Dylan uses a 6-foot long, 1:12 scale flume to illustrate fundamental hydraulic principles. This hands-on demonstration ensures a deeper understanding of culvert hydraulics. The workshop explores culvert inspection principles and decision-making frameworks essential for determining the need for rehabilitation or replacement. We look at real-world case studies showcasing effective strategies employed to rectify culvert failures, thereby enriching participants' knowledge base with practical insights. The last segment of the workshop introduces attendees to valuable FHWA resources such as the Hydraulic Toolbox and HY-8, equipping them with tools for efficient culvert design and maintenance practices. By providing a comprehensive overview of culvert fundamentals and practical applications, this workshop empowers participants to make informed decisions and implement effective solutions.

Debris Flow Forum

Wednesday | 8:30 (2 hours)

This session will include an introduction framing the issue surrounding debris flow, including the variety of terms, definitions, modeling approaches, and intended outcomes. There will then be a round of brief presentations highlighting recent case studies by different firms and individuals. Finally, the session will conclude with an open forum discussion with questions from the audience. The intent is to provide a platform to discuss why we choose to apply the specific models that we do and the benefits and limitations of different approaches to modeling water flows containing varying levels of sediment and debris for varying purposes from planning to design to forensics.

BLE Data for Floodplain Management

Thursday | 9:00 (3 hours)

What is BLE data and how does it differ from Best Available Data? Which data do I refer to for permitting? When is it not prudent to use BLE data? This presentation will help to guide the audience in understanding how BLE data are developed and how it fits into the regulatory world of the NFIP. Discussion is included on 1D vs 2D BLE and how BLE data is now contracted and scoped to become updated FIRM data. Suggested uses of the BLE Data will be provided with practical examples of when to use BLE data for floodplain management and when to use your FIRM. Can BLE data be regulatory? Yes, but only in certain circumstances. This workshop will be your guide.

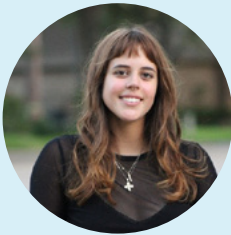


THANKS TO OUR MODERATORS!

Jeff Battiste - MHFD
Andrew Earles - Wright Water Engineers
Drew Roberts - MHFD
Frans Lambrechtsen - Kimley-Horn
Brent Kaslon - Valerian

Kevin Doyle - Michael Baker
Sara R. Johnson - Muller Engineering
Candice Owen - MHFD
Jen Winters - MHFD
Melissa Bryant - RESPEC

CASFM GIVES BACK



BEN URBONAS SCHOLARSHIP

Victoria Lara

As a full-time graduate student at the Colorado School of Mines, Victoria Lara is pursuing a Master's degree in Hydrology through the Hydrologic Science and Engineering program. She is driven by her passion for understanding and addressing the effects of climate change on natural systems, with an emphasis on biogeochemistry. Her professional experience includes working with public land agencies in the realms of natural resource management and civil engineering - roles that she has found very exciting and rewarding. Her goal is to continue to work in fields that safeguard our natural resources as well as provide widespread benefits to our communities.

FAMILY SCHOLARSHIP

Aidan Kroeger

Aidan Kroeger graduated from Green Mountain High School in 2020. He currently is in his senior year at Montana State University in Bozeman Montana, where he is pursuing a bachelor's degree in Mechanical Engineering Technology with minors in Aerospace Engineering and Building Energy Systems. He hopes to utilize his degree in the advancement of manufacturing process and technological development within the aerospace industry.



UNDERGRADUATE SCHOLARSHIP

Allison Klemstein

The 2023-2024 Undergraduate Scholarship recipient is Allison Klemstein. She is a sophomore Civil Engineering student at Colorado School of Mines and will graduate in May 2026. She is considering a master's in Hydrologic Science and Engineering through a 4+1 program. After graduating, she plans to work in the water resources sector and focus on stormwater, inspired by her coursework and enjoyment of the outdoors. At Mines, she is an officer in ASCE and her sorority, and enjoys hiking in her free time.

CASFM GIVES BACK

2024 RESEARCH GRANT - \$5000

Investigation of Flow Energy Dissipation and Application to Design in Closed-Conduit, Open-Channel Flow

Spencer Ervin

Open-channel flow in closed conduits, such as culverts, occurs when these conduits are not fully pressurized, leading to increased flow velocity and potential negative impacts like erosion and reduced ecosystem connectivity. A student design team at Fort Lewis College, supervised by Dr. Matthew Klema, is investigating energy dissipation designs to mitigate these issues. The project will use modern modeling techniques, including a physical model in the FLC fluids lab and numerical simulations via computational fluid dynamics (CFD), to optimize designs. The goal is to create a practical design tool for engineers, similar to existing Hydraulic Engineering Center resources. The funding provided by the CASFM will support research dissemination and lab materials, which will help extend the lifespan of infrastructure while protecting the environment. The project is in consultation with the Four Corners Water Center.

CASFM is excited to support this research in the evaluation of opportunities to retrofit existing infrastructure and improve water quality. As an organization, we are excited to support future industry professionals who are evaluating ways to solve the existing challenges facing our industry.

2024 DISASTER RELIEF GRANTS - \$5000

Fountain Creek at Pueblo, Co. - 07106500



Recurrence Interval	Mean Annual Flow	Bankfull Flow	2-Year	5-Year	10-Year	June 16, 2015 Event	50-Year	100-Year	500-Year
Discharge (ft³/s)	158 ¹	2,990 ²	4,600 ³	9,500 ³	14,400 ³	18,500 ³	36,200 ³	39,600 ³	70,000 ³

¹ Average annual flow from USGS data from 1985-2014.
² USACE Fountain Creek Watershed Study.
³ FEMA Hydrology Report for Fountain Creek, El Paso County, CO.
 Figure 6. USGS Flow Data for Fountain Creek at Pueblo, CO and Design Hydrology.

Fountain Creek Watershed District Supports Victims of Flood Disasters in Pueblo County

Alli Schuch, Executive Director Fountain Creek Watershed District

The Fountain Creek Watershed District will assist private landowners in Pueblo County who are facing severe flooding, erosion, and land loss exacerbated by past wildfires and rapid development. Following significant flooding events in June and July 2023, local landowners reported urgent concerns about property damage, yet Pueblo County did not receive federal disaster assistance. The CASFM Disaster Relief Grant will enable the District to create a landowner partnership program focused on erosion control through the installation of native willow cuttings. This program will include developing a landowner database, hosting educational workshops, conducting site assessments, and implementing willow plantings to protect properties.



Private Driveway Culvert Replacement in Pine, CO

Jennifer L. Ashworth

In 2023, a bridge on Elk Creek Road in Jefferson County was severely impacted. The flooding led to significant erosion and the failure of a culvert under the driveway, disrupting vehicle access and affecting daily activities and livestock care. After collaborating with engineers and local authorities to obtain necessary permits, the applicant constructed a bridge over four weeks at their own cost and with no insurance coverage. The CASFM Disaster Relief Grant will help fight the financial distress caused by this disastrous flood damage.



2023 ENGINEERING EXCELLENCE AWARD RECIPIENT

WILDFIRE READY WATERSHEDS

Colorado Water Conservation Board | Olsson

Recognizing the challenges associated with post-fire risk assessment and recovery efforts, the Colorado Legislature directed the Colorado Water Conservation Board to create and implement the Wildfire Ready Watersheds (WRW) program. Under WRW, CWCB supports communities in characterizing the susceptibility of their watersheds, and the gray and natural infrastructure within them, to post-fire impacts before a wildfire occurs. It also supports communities to create pre- and post-fire mitigation plans, thus preparing them for post-fire impacts and identifying and prioritizing actions to be taken before a wildfire.

The evaluations and procedures used in post-fire recovery planning can also be performed before a wildfire occurs based on prediction of burn severity and extent. Planning before a wildfire can lead to better and more streamlined implementation of projects to mitigate the effects of post-fire hazards.



Image Credit: Katie Jagt (WSD)

At a statewide scale, the WRW program has developed an overview of susceptibility of values-at-risk to post-fire hazards. That information can be found on the WRW website (www.wildfirereadywatersheds.com). This statewide evaluation provides an indication of which watersheds have low, moderate, and high susceptibility to post-fire hazards across different categories of hazards and values-at-risk. This statewide risk assessment was conducted at a coarse scale and does not provide community or neighborhood level data. Additional studies and planning efforts are needed to characterize post-fire susceptibility at the community scale and develop actionable mitigation plans that can be implemented today or in the aftermath of a wildfire.

In order to assist this critical community-level planning, the WRW Framework was developed to guide communities and their watershed stakeholders to complete a Wildfire Ready Action Plan (WRAP). The WRAP is a planning process that develops two types of implementation plans:

- Pre-disaster Preparedness Plan. A plan that considers susceptibility and identifies projects and mitigation that can occur before a wildfire occurs.
- Post-Disaster Preparedness Plan. A plan to address threats to life and property after a wildfire occurs.

Since the beginning of 2023, CWCB has provided grant funding for nearly \$6.6 million for WRW planning and implementation activities and will have \$10 million awarded by the middle of October, 2024.

PREVIOUS CASFM AWARD RECIPIENTS

Year	Winning Project	Companies & Agencies
2023	Wildfire Ready Watersheds	Colorado Water Conservation Board, Olsson
2022	Cherry Creek Corridor (Quebec to Iliff) Improvements	Muller Engineering Company
2021	Globeville Stormwater Systems Study	Merrick & Co.; City and County of Denver; OV
2020	Sanderson Gulch Channel Improvements	ICON Engineering, City and County of Denver DOTI, MHFD, Valerian, Great Ecology, San Engineering
2019	US 34 Big Thompson Canyon Flood Recovery	Jacobs, Ayres, Kiewit, Muller, State of Colorado, CDOT
2018	Colorado Emergency Watershed Protection Program	Colorado Water Conservation Board
2017	Little Dry Creek Park	City of Westminster, MHFD, Adams County, State of Colorado, Muller, Matrix
2016	South Platte River Vision Implementation Program: Grant- Frontier Park to Overland Pond Park	The Greenway Foundation, City and County of Denver Parks and Recreation Department, CDM Smith
2015	Cherry Creek Bailey Ecological Park	Arapahoe County Open Space, SEMSWA, MHFD, Cherry Creek Basin Water Quality Authority, Muller, Valerian
2014	To Move a River- Saving Loveland's Water Supply	City of Loveland, Ayres Associates, and Tetra Tech

2024 CASFM ENGINEERING EXCELLENCE AWARD

Beginning in 2020, the CASFM Engineering Excellence Project Award was divided into two main categories: Construction and Non-Construction projects. The awards are given in alternating years. For 2024, CASFM is awarding a Construction project award.

The following entries have been selected to present during the conference, and members will have the opportunity to vote for their favorite in real time during the presentations. The results will be announced during the closing session of the conference.

Nominees are listed in no particular order.

ENGINEERING EXCELLENCE AWARD 2024 NOMINEES





**Nomination for Outstanding
Construction Project**

**Kennys Run Greenway
Golden, CO**



April 2024

2024



Central 70

2024 CASFM Award Nomination for Outstanding Construction Project

Community. Connections. Commerce.

THANK YOU TO OUR SPONSORS!

PLATINUM



GOLD



MERRICK®



SILVER



SPONSOR CONTACT INFORMATION

<i>FIRM</i>	<i>CONTACT</i>	<i>EMAIL</i>	<i>PHONE</i>
Advanced Drainage Systems	Jerome Magsino	jerome.magsino@adspipe.com	303-349-7555
Anderson Consulting Engineers, Inc.	Brian Smith	brian.smith@acewater.com	970-226-0120
AquaShield, Inc.	Laddie Fromelius	lfromelius@aquashieldinc.com	303-927-8697
Ayres Associates	Mandy Hahn	hahna@ayresassociates.com	612-618-2233
Bohannon Huston, Inc.	Craig Hoover	choover@bhinc.com	970-902-0988
Bowman Construction Supply	Bill Murphy	bmurphy@aspent.com	515-414-4568
Calibre Engineering	Emily Villines	evillines@calibre-engineering.com	303-730-0434
Carollo Engineers	Becca Falk	rfalk@carollo.com	303-404-6385
Contech Engineered Solutions, LLC	Jaimee O'Dea	jaimee.odea@conteches.COM	720-766-8422
CORVUS Environmental Consulting	Tim DeMasters	tdemasters@corvusenv.com	303-872-7084
Dewberry	Danny Elsner	eelsner@dewberry.com	303-951-0639
ERO Resources Corporation	Moneka Worah	mworah@eroresources.com	303-830-1188
Felsburg Holt Ullevig	Josh Root	josh.root@fhueng.com	303-829-4366
Ferguson	Laura Finch	laura.finch@ferguson.com	720-557-5842
Freese and Nichols, Inc.	Morgan Lynch	morgan.lynch@freese.com	720-773-5558
Galloway & Company, Inc.	Katie Fitzpatrick	katiefitzpatrick@gallowayus.com	303-962-8430
Hanes Geo Components	Andrew Bertelson	drew.bertelson@hanescompanies.com	303-720-2345
HR Green, Inc.	Greg Panza	gpanza@hrgreen.com	720-602-4999
ICON Engineering	Troy Carmann	tcarmann@iconeng.com	303-221-0802
Jacobs	Joshua Juron	Joshua.Juron@jacobs.com	720-286-0443
Kimley-Horn and Associates	Frans Lambrechtsen	frans.lambrechtsen@kimley-horn.com	720-484-4558
Matrix Design Group	Drew Beck	drew_beck@matrixdesigngroup.com	303-572-0200
Merrick & Company	Christi Wisleder	christi.wisleder@merrick.com	303-353-3677
Michael Baker International	Kevin Doyle	kdoyle@mbakerintl.com	303-503-9871
Mountainland Supply	Jack Knaub	jack.knaub@mountainland.com	303-709-0720
Muller Engineering Company	Joe Juergensen	jjjuergensen@mullereng.com	(720) 470-2648
Oldcastle Infrastructure	Madi Snyder	madison.snyder@oldcastle.com	303-482-6282
Olsson	Deb Ohlinger	dohlinger@olsson.com	303-237-2072
Otak	Tracy Emmanuel	tracy.emmanuel@otak.com	720-758-7723
Pipeline Reline Solutions	Michael Rothenberg	michael.rothenberg@	208-724-7792
RESPEC	Rebecca Moser	rebecca.moser@respec.com	303-909-9831
StormTrap	Thais Giacomet	thaisg@stormtrap.com	815-342-4308
Stream Landscape Architecture	Jesse Clark	jclark@streamla.com	720-663-7352
Valerian, LLC	Cassie Kaslon	cassie@valerianllc.com	303-347-1200
Verdantas	Chad Morris	cmorris@verdantas.com	970-294-5242
Western States Water	Jerry Naranjo	jerry@naranjocivil.com	970-590-9540
Wright Water Engineers	Andrew Earles	aearles@wrightwater.com	303-480-1700





ERO Resources Corporation

Consultants IN NATURAL RESOURCES AND THE ENVIRONMENT



National Environmental Policy Act
Compliance



Biological Resources



Cultural Resources



Environmental Due Diligence and Remediation



Environmental Planning



ABOUT US

For over 40 years, ERO Resources Corporation has maintained an unwavering dedication to quality and integrity while serving clients in Colorado and the Intermountain West. Our team of diverse consultants offers a comprehensive suite of services including natural resource and environmental evaluation, compliance, open space planning, environmental impact assessment, and facilitation. ERO is a leader in resource evaluation, open space planning, and environmental impact assessment, with extensive experience collaborating with local governments on open space and community planning projects. Leveraging our scientists' proven technical expertise, regulatory knowledge, and problem-solving skills, we deliver cost-effective and innovative solutions tailored to our clients' complex environmental challenges that balance resource conservation and outdoor access and recreation.

GET IN TOUCH



Phone: 303.830.1188
Address: 1626 Cole Boulevard
Suite 100, Lakewood, CO 80401

www.eroresources.com

Bringing
infrastructure,
environment
and community
together.

stream

landscape architecture + planning



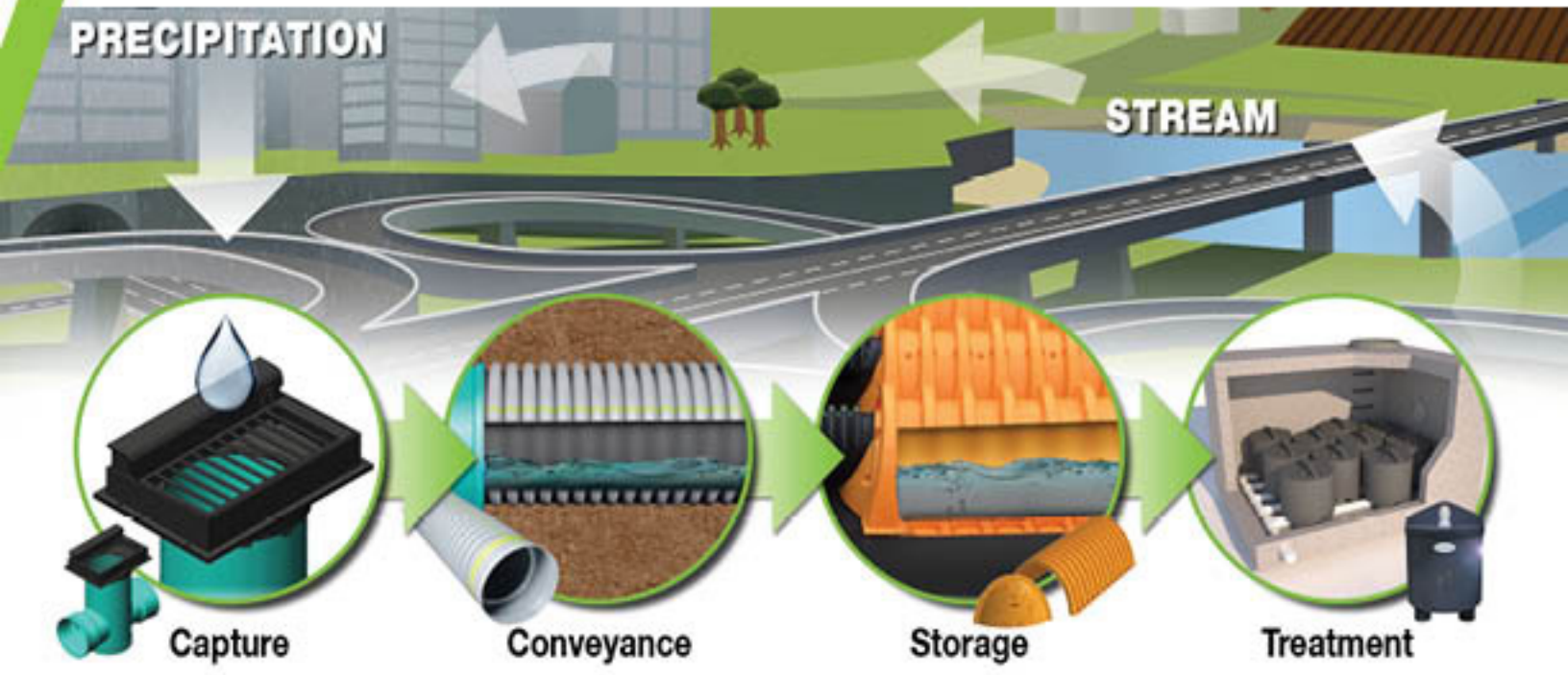
Parks, Trails + Open Space
Waterways + Urban Infrastructure

EXPERIENCE | IMAGINATION | EXPERTISE



**Connecting people
to the environment
through thoughtful
design**

Innovative Water Management Solutions



For more information please contact
Jerome Magsino at jerome.magsino@adspipe.com

© 2024 Advanced Drainage Systems, Inc.



Bohannon Huston

Denver | Grand Junction
bhinc.com



EVERY DROP MATTERS

STORMWATER QUALITY DESIGN | GREEN INFRASTRUCTURE | GEOMORPHOLOGY
WATERSHED MASTER PLANNING | STORMWATER INFRASTRUCTURE DESIGN

Are you water rescue ready?

we  water

CIVIL | STRUCTURAL | WHITEWATER
CALIBRE-ENGINEERING.COM

Calibre



STORMWATER SOLUTIONS FOR COLORADO

Carollo offers tailored solutions for stormwater management across Colorado. Our services range from master planning and floodplain management to flood mitigation and stream stabilization. With over 25 years of experience serving Colorado communities, we understand the unique challenges and opportunities in this region. Our commitment goes beyond infrastructure. We prioritize public safety, economic vitality, and the preservation of natural resources to create resilient systems and healthy watersheds for our communities.

 **carollo**

303-635-1220 / carollo.com

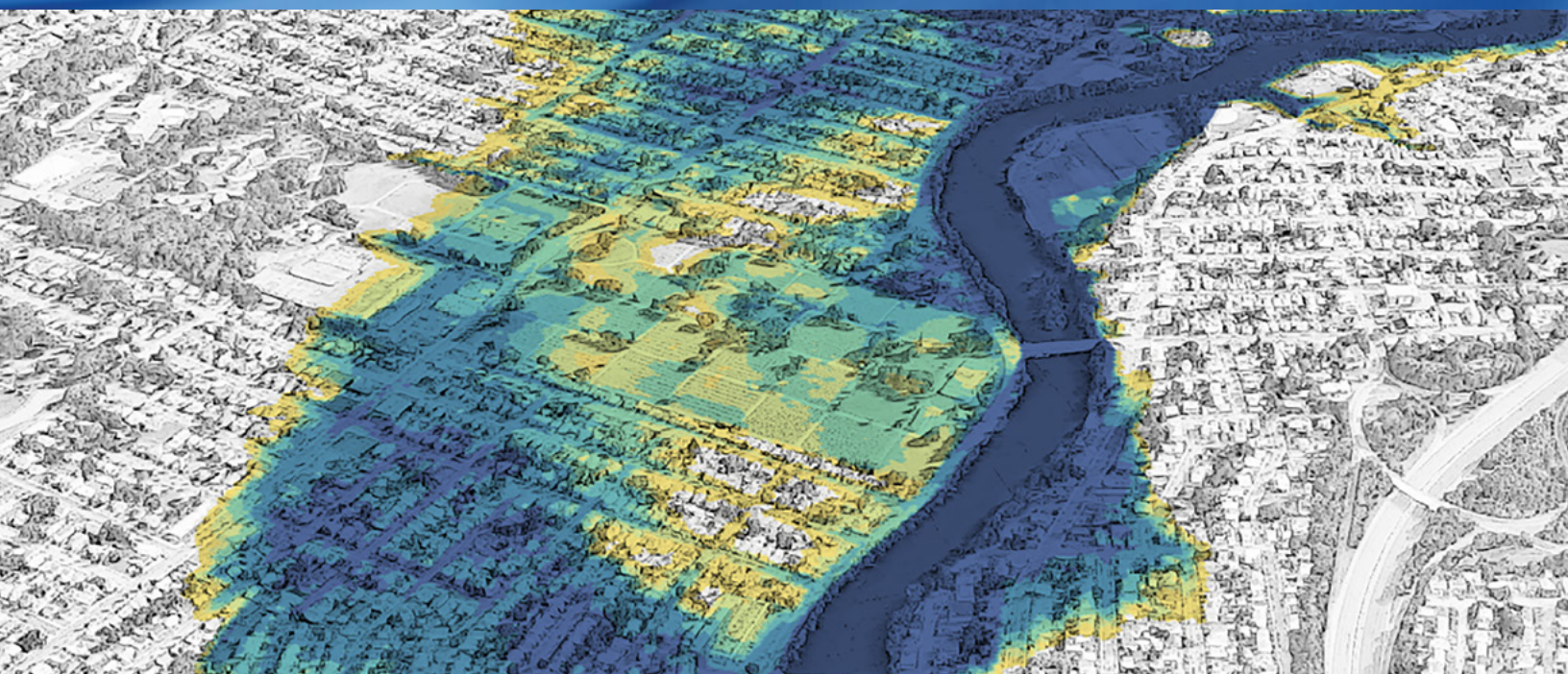
STORMWATER MANAGEMENT SOLUTIONS



YOUR TRUSTED PARTNER IN ENHANCED BIOFILTRATION & MEDIA FILTRATION

Contech Engineered Solutions LLC
5670 Greenwood Plaza Blvd., Suite 530
Greenwood Village, CO 80111

www.ContechES.com/stormwater
720-587-2701



LOCAL KNOWLEDGE
BACKED BY THE DEEP RESOURCES
AND STABILITY OF A NATIONAL FIRM

FERGUSON **WATERWORKS**



► COLORADO SPRINGS | DENVER

Providing engineering and technical management solutions
that **build communities** and **improve lives.**





We're pushing the limits of what's possible.

Water connects us and affects us all. We recognize water's role in the natural cycles of our planet; its connections to land, food, and energy — and perhaps most importantly, its influence on our cities, our societies, and our cultures.

At Jacobs, we use this perspective to help our clients implement integrated solutions to address the world's most pressing climate and water management issues.

We're driven to make a difference on your projects and in our world.

Follow us @JacobsConnects | jacobs.com



Jacobs

Challenging today.
Reinventing tomorrow.



Improving our Communities.
Inspiring the Future. Together.

Stream and Floodplain Services

Water Utility Services

Urban Stormwater



Water Resources ■ Planning ■ Transportation ■ Engineering ■ Environmental

matrixdesigngroup.com

707 17th Street, Suite 3150
Denver, CO 80202
303.527.0200

2435 Research Parkway, Suite 300
Colorado Springs, CO 80920
719.575.0100



8600 Park Meadows Drive, Suite 800
Lone Tree, CO 80124
303.572.0200

Want to be a part of exciting projects in Colorado and beyond? Learn more at matrixdesigngroup.com/careers

Your Partner in Urban Stream Restoration

Personalized problem-solving to meet your community's needs.

Feasibility & Planning | Funding Support

Hydrology & Hydraulics | Flood Modeling | Adaptive Management

River Safety | Design & Permitting | Water Quality

Riverfront Parks | Construction Management



MERRICK[®]

www.merrick.com

Supporting CASFM & Clients
since 1980

2022 CASFM
ENGINEERING EXCELLENCE
PROJECT AWARD

WINNER

MULLER
ENGINEERING COMPANY

Cherry Creek
Corridor Improvement Project
Quebec to Iiff

olsson.com

olsson®

Most see a creek.
We see a community's ecosystem.

ENGINEERING POSSIBILITIES.



Rivers + Structures Designing Solutions

Unique design challenges arise where infrastructure meets a river. We've tackled these challenges on thousands of projects involving bridges, dams, channel improvements, roadways, storm sewer systems, and floodplains while actively working to enhance our industry's understanding of hydraulics. If your facility needs to coexist with moving water, you'll find our passion, experience, and skill in hydraulic design to be invaluable.

AYRES
RIVER ENGINEERING+
WATER RESOURCES



www.AyresAssociates.com | 970.223.5556

CALIFORNIA | COLORADO | FLORIDA | MINNESOTA | WISCONSIN | WYOMING



SCHEDULE AT-A-GLANCE

2024 CASFM Conference Schedule							
Monday 9/30		Tuesday 10/1			Wednesday 10/2		Thursday 10/3
6:30		Yoga <i>Gore Range</i>			Yoga <i>Gore Range</i>		Yoga <i>Gore Range</i>
7:00		Registration <i>Sawatch Hall Foyer</i>			Breakfast <i>Sawatch Hall</i>		Breakfast <i>Sawatch Hall</i>
7:30		Breakfast <i>Sawatch Hall</i>			Breakfast <i>Sawatch Hall</i>		Breakfast <i>Sawatch Hall</i>
8:00		Opening <i>Sawatch Hall</i>			Culvert Design Workshop <i>McCoy's Peak</i>	Become a Mental Gymnast Workshop <i>Grouse/Jackson</i>	Debris Flow Forum <i>Heritage Hall</i>
8:30		Keynote <i>Sawatch Hall</i>					
9:00		Project Awards <i>Sawatch Hall</i>			Board Meeting <i>Gore Range Hall</i>	Lunch (Grab & Go) <i>Sawatch Hall Foyer</i>	BLE Data for Floodplain Management Workshop <i>Heritage Hall</i>
9:30		Lunch <i>Sawatch Hall</i>					
10:00	Mountain Bike Tour <i>Beaver Creek</i>	Hazard Management <i>McCoy's Peak</i>	Stormwater Quality <i>Heritage Hall</i>	Project Showcase <i>Grouse/Jackson</i>	Regulatory Issues <i>Heritage Hall</i>	Stream Restoration <i>Grouse/Jackson</i>	Technical Modeling <i>McCoy's Peak</i>
10:30		Break <i>Sawatch Hall Foyer</i>			Break <i>Sawatch Hall Foyer</i>		
11:00		Break <i>Sawatch Hall Foyer</i>			instead Talks: Potpourri <i>Grouse/Jackson</i>		instead Talks: Soft Skills <i>Heritage Hall</i>
11:30		Break <i>Sawatch Hall Foyer</i>			Core Values Quest <i>Heritage Hall</i>		
12:00		Break <i>Sawatch Hall Foyer</i>			Break <i>Sawatch Hall Foyer</i>		
12:30		Break <i>Sawatch Hall Foyer</i>			Break <i>Sawatch Hall Foyer</i>		
1:00	Geomorphology Short Course Workshop <i>Heritage Hall</i>	Happy Hour <i>McCoy's Peak Patio</i>			Happy Hour <i>Park Lawn</i>		
1:30		Happy Hour <i>McCoy's Peak Patio</i>			Happy Hour <i>Park Lawn</i>		
2:00	Hands-On HEC-RAS 2D Workshop <i>Mount Jackson</i>	Happy Hour <i>McCoy's Peak Patio</i>			Happy Hour <i>Park Lawn</i>		
2:30		Happy Hour <i>McCoy's Peak Patio</i>			Happy Hour <i>Park Lawn</i>		
3:00		Ice Breaker Reception <i>McCoy's Peak Patio</i>			Banquet Dinner <i>Sawatch Hall</i>		
3:30		Ice Breaker Reception <i>McCoy's Peak Patio</i>			Banquet Dinner <i>Sawatch Hall</i>		
4:00		Ice Breaker Reception <i>McCoy's Peak Patio</i>			Banquet Dinner <i>Sawatch Hall</i>		
4:30		Ice Breaker Reception <i>McCoy's Peak Patio</i>			Banquet Dinner <i>Sawatch Hall</i>		
5:00		Ice Breaker Reception <i>McCoy's Peak Patio</i>			Banquet Dinner <i>Sawatch Hall</i>		
5:30		Ice Breaker Reception <i>McCoy's Peak Patio</i>			Banquet Dinner <i>Sawatch Hall</i>		
6:00		Ice Breaker Reception <i>McCoy's Peak Patio</i>			Banquet Dinner <i>Sawatch Hall</i>		
6:30		Ice Breaker Reception <i>McCoy's Peak Patio</i>			Banquet Dinner <i>Sawatch Hall</i>		
7:00		Ice Breaker Reception <i>McCoy's Peak Patio</i>			Banquet Dinner <i>Sawatch Hall</i>		
7:30		Ice Breaker Reception <i>McCoy's Peak Patio</i>			Banquet Dinner <i>Sawatch Hall</i>		
8:00		Ice Breaker Reception <i>McCoy's Peak Patio</i>			Banquet Dinner <i>Sawatch Hall</i>		
8:30		Ice Breaker Reception <i>McCoy's Peak Patio</i>			Banquet Dinner <i>Sawatch Hall</i>		
9:00		Ice Breaker Reception <i>McCoy's Peak Patio</i>			Banquet Dinner <i>Sawatch Hall</i>		
9:30		Ice Breaker Reception <i>McCoy's Peak Patio</i>			Banquet Dinner <i>Sawatch Hall</i>		
10:00		Ice Breaker Reception <i>McCoy's Peak Patio</i>			Banquet Dinner <i>Sawatch Hall</i>		
10:30		Ice Breaker Reception <i>McCoy's Peak Patio</i>			Banquet Dinner <i>Sawatch Hall</i>		

General session	10-minute presentation	25-minute presentation	1-4 hour workshop	Meal/reception	Activity
-----------------	------------------------	------------------------	-------------------	----------------	----------

See You in Steamboat in 2025!

THE STEAMBOAT GRAND

September 22 - 26, 2025

2300 Mt Werner Cir, Steamboat Springs, CO

