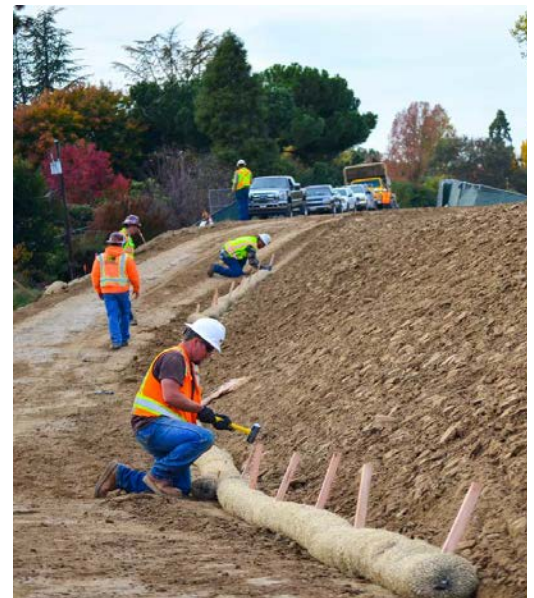


STORMWATER MANAGEMENT AND EROSION CONTROL (SMEC) TECHNICIAN TRAINING

MESA COUNTY
•
ALTITUDE TRAINING
ASSOCIATES



Protecting Our Rivers.



Course Description: The class is focused on the proper installation and maintenance of control measures to manage erosion and sedimentation. This entry-level, one day course has been developed for all construction site personnel engaged in stormwater management on permitted construction sites. The program covers:

- The Stormwater Program legal requirements including permitting and erosion and sedimentation at construction sites.
- Types of Control Measures (CMs) for specific conditions to control erosion and sedimentation.
- Installing construction site CMs.
- Inspecting and maintaining construction site CMs.

Learning Objectives – Upon completion of this class, you will be able to:

- List the permit requirements under the construction stormwater program.
- Describe the impacts to water quality caused by erosion and sedimentation.
- Describe the installation and maintenance requirements for CMs used during construction.

Monday,
February 8, 2021
8:00 AM-5:00 PM

Online/Vitural Training

Visit:

<https://stormwater.mesacounty.us/events-and-training/>
to begin registration